



IMPORTING

[www.armeniacoffee.com](http://www.armeniacoffee.com)



ROASTING

[www.regalcommodities.com](http://www.regalcommodities.com)



PACKAGING

[www.jjmpackage.com](http://www.jjmpackage.com)



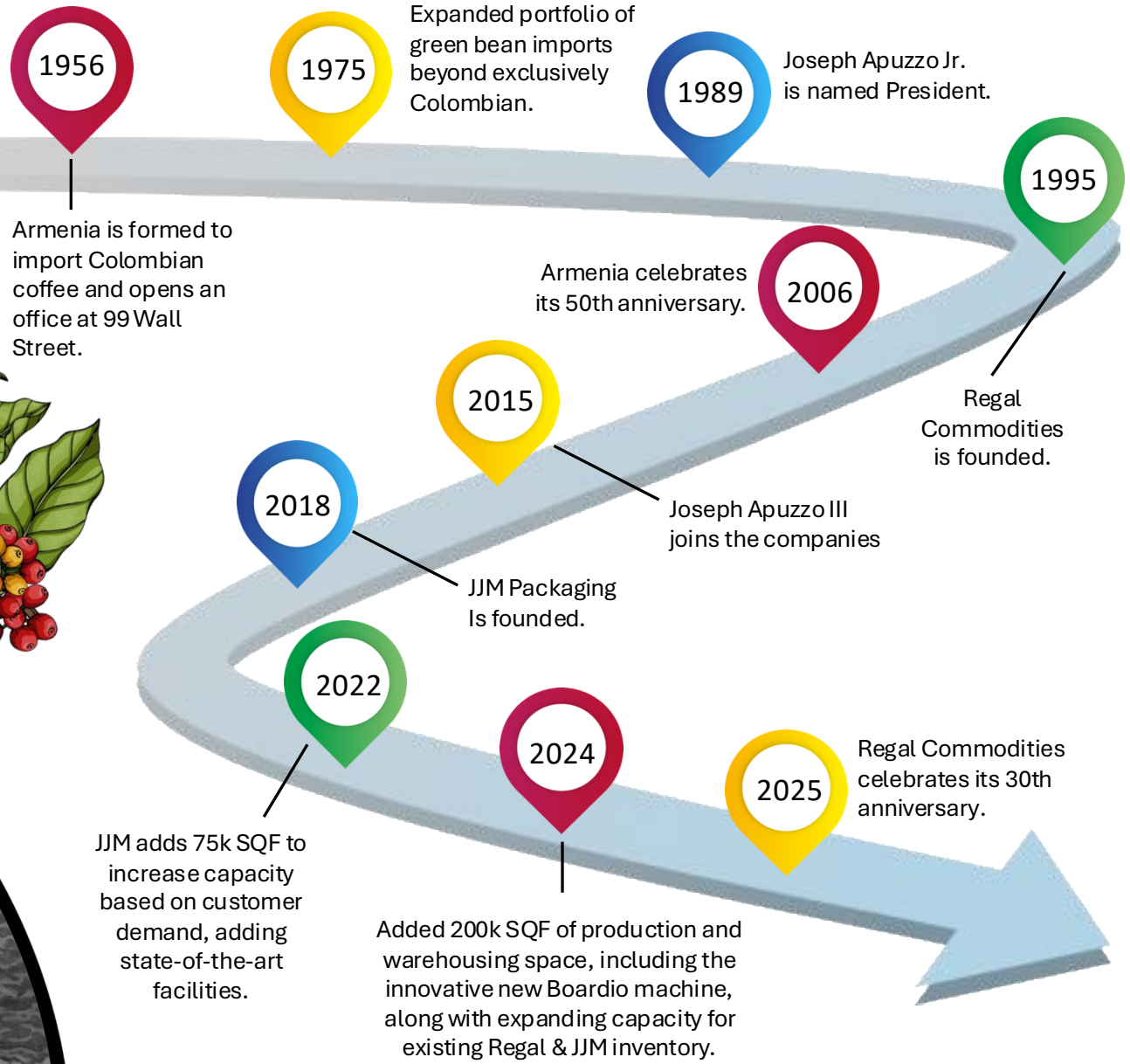
**BLOOM FIBERS**  
organic material innovation

INNOVATION

[www.bloomfibers.com](http://www.bloomfibers.com)

# 3 Generations – 3 Businesses

Established in 1956 by Joseph Apuzzo Sr., Armenia Coffee Corporation has solidified its reputation in the industry as one of the premier green coffee importers in the country. Joe Jr. created Regal Commodities. Joe III created JJM Packaging.



# OUR FACILITIES



Regal Commodities- 721 Union Blvd., Totowa, NJ



JJM Packaging - 20 Commerce Way, Totowa, NJ



Warehouse and Offices- 200 Maltese Dr., Totowa, NJ

# 200 MALTESE DRIVE

**STATE OF THE ART MANUFACTURING FACILITY**

**BRAND NEW – Open Rooms – Ready to Run**

## TOTAL SQUARE FOOTAGE:

- Finished Goods Storage: 45,000
- Raw Materials Storage: 55,000
- Shipping & Receiving: 30,000
- Manufacturing Space: 70,000

## FEATURES:

- Epoxy Floor
- Drop Ceilings
- Wipe Down Walls
- Brand New Manufacturing Suite Build-Out
- 100 Ton Chiller for Temperature and Humidity control




Suite#	Description	Size
1	Boardio Canister Machine	4,000 SF
2	Boardio Filling Room	1,500 SF
3	RA Jones Machine	3,000 SF
4	Pouching Room	3,000 SF
5	Blend Preparation Suite	1,000 SF
6	Blend Preparation Suite	1,000 SF
7	Blend Preparation Suite	1,000 SF
8	Ribbon Blender	3,000 SF
9	Additional epoxy flooring space built out for manufacturing expansion	12,000 SF





*Armenia*  
**COFFEE CORPORATION**  
EST. 1956

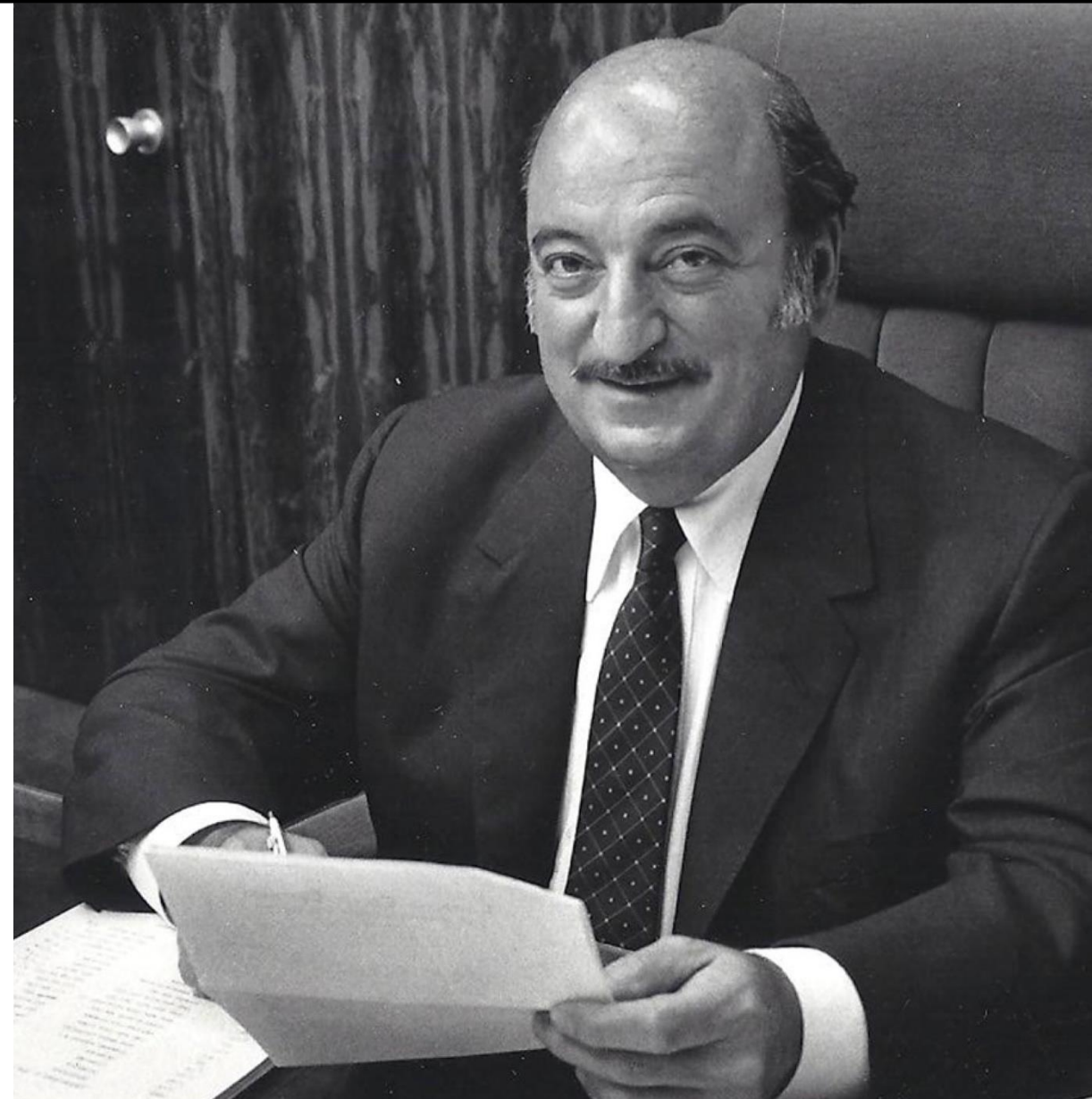
CELEBRATING  
**70** *Years*  
1956-2026



## ARMENIA'S HISTORY

Armenia Coffee Corporation was founded by Joe Apuzzo Sr. in 1956 and has since been one of the premier green coffee importers in the world. Currently owned and operated by Joseph Apuzzo Jr. Armenia has over 200 years of combined experience in sourcing green coffees in Central and South America, Africa, and Asia.

In an industry in which success hinges on the level and quality of service, the Armenia team understands that a strict commitment to the needs of our clients is imperative. For over 70 years Armenia has maintained an impeccable reputation for standing behind the quality of the product that it delivers, which goes far beyond the coffee itself.





## ARMENIA FACTS

- Family owned & operated since 1956.
- Currently in its third generation.
- We import from over 50 different producing areas.
- We have an in-house Q-grader.
- Our trading staff has over 200 years of combined coffee trading experience.
- We embrace our long withstanding origin relationships.
- We believe in visiting our origin countries multiple times a year.
- We are Flo-Id, Rain Forest Alliance, C-TPAT and Fair Trade USA certified.

## ARMENIA'S BOTTOM LINE

Providing this link with roasters in the United States to the farmers in the coffee growing regions around the world comes with many challenges. Providing exceptional coffee at a fair price is imperative, but we feel the relationships we foster are invaluable. Armenia is a full-service organization that is your personal connection between the ever-growing roasting community and the supply chain of the global coffee trade.

Regal benefits from this transparency by offering the expertise of the Armenia team daily. Armenia guarantees the demands of Regal clients are met and exceeded. Both teams meet weekly to confirm all raw material expectations and deliveries are on schedule. Both teams have jointly created a structure that gives Regal the upper hand in offering a fully integrated organization.







## CERTIFICATIONS

Our coffee is proudly certified by several organizations to ensure it exceeds industry standards for quality, taste and environmental sustainability.



Find out more at [ra.org](http://ra.org)





# REGAL COMMODITIES

PRIVATE BRAND COFFEE ROASTERS

## OUR MISSION/HISTORY

As an importer of high-quality green coffee for 70 years we brought our experience, relationships and coffee knowledge to the roasting industry.

We have assembled a team of highly accomplished coffee professionals from various disciplines of the trade together to form Regal Commodities.





# Let us develop your private brand coffee.

Our goal is to deliver to our clients the best roasted coffee that our expertise can produce. We have **100+** years of experience in sourcing, trading, hedging, importing, and roasting coffee.



## Blending

Let our experience in coffee work for you to develop your own private label blend.



## Roasting

Our Roast Masters will produce to exacting requirements. From a light roast to our exceptional Italian process, we produce all variants.



## Grinding

Regal has multifaceted capacity and the ability to produce on a large scale. Single serve, K-cups, pour over, auto brew, urn, and cold press.



## Packaging

Our facility can package your finished product in a variety of forms. From popular Single-serve cups to bulk packaging for C-store vending.

# OUR METHOD

## DEVELOPING YOUR PRIVATE BRAND PRODUCT

Leveraging our coffee expertise, we are prepared to work with you to develop that signature blend that sets you apart. There is a lot to the process, so we've simplified it here quite a bit. Just know we are eager to do as much as we can to get you there.



### COFFEE BAGS

Long, skinny pouches made of paper or plastic and sealed on two short ends.



### BOARDIO

These containers support products such as powder fillings, protein powders, dry food, and coffee.



### K-CUPS

Hot beverage or health supplement in a K-Cup compatible format.



### POUCHES

Stand-up pouches, flat barrier bags, vertical pouches, or horizontal pouches with up to 4-sided seals.



### SACHETS – FRACTIONAL

A perfectly proportioned product. 3 or 4-sided. Wide variety of sizes.



### CANISTERS

For dry food and supplement products. Customized to any fill weight, size, and design.

## SOURCING EXPERTISE

Regal Commodities' owner is also the owner of Armenia Coffee Corporation, a premiere green coffee importer with over 70 years of industry knowledge and experience.



**Armenia**  
COFFEE CORPORATION  
EST. 1956

CELEBRATING  
**70** Years  
1956-2026

# PRODUCT DEVELOPMENT

## DOUBLE CHAMBER K-CUP

Technology that has been designed to utilize a K-Cup as a vehicle to deliver coffee additives to meet consumer needs. This technology lends itself to adding any soluble ingredient to a standard ground coffee K-Cup.

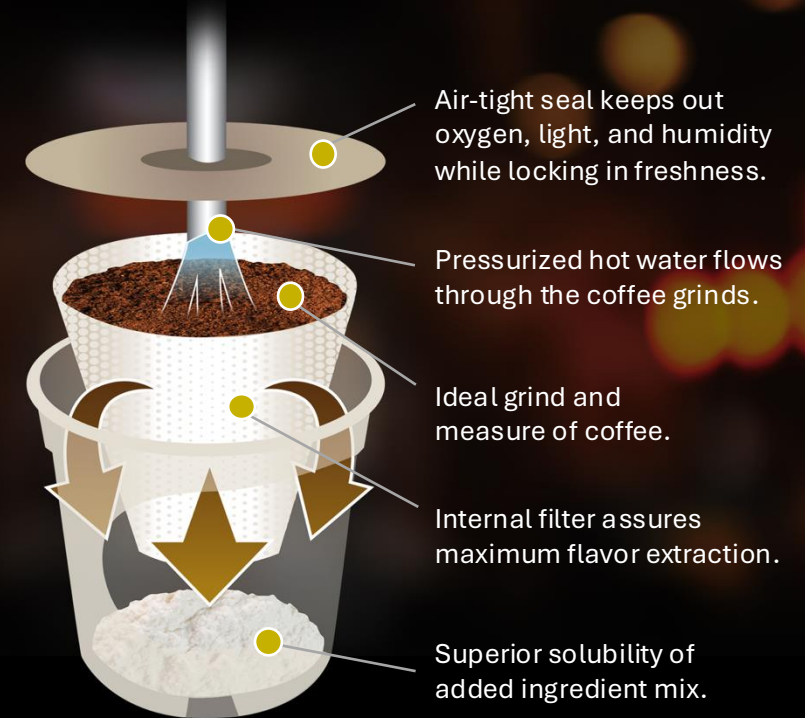
Given people’s routine connection with coffee, we are also developing this vehicle to deliver many of the wellness ingredients that need to be consumed on a regular basis to show real efficacy i.e., hydration, immune, sleep, and greens.

	18-24	25-39	48-54	60+
<b>Sweetened</b>	62%	67%	50%	42%
<b>Whitened</b>	71%	73%	69%	60%
<b>Flavored</b>	30%	22%	22%	14%
<b>Black</b>	15%	14%	4%	33%

# Double Chamber K-Cup

## TECHNOLOGY

- Allows for real ground coffee + creamer and/or sugar, flavoring, vitamins and minerals all in the same K-Cup.
- Precise individual dosing of coffee and added ingredient mix.



**NEW INNOVATION:**  
 Creamer, supplements, and flavoring powders placed in the lower chamber dissolve into freshly brewed coffee as they pass through.

SUSTAINABLE PACKAGING

# BOARDIO™ CONTAINERS

Boardio containers support products such as powder fillings, protein powders, dry food, and coffee. With Boardio containers, we can offer a wide range of sizes and product fill weights. Boardio is sustainable packaging made from certified board material. By choosing this product, you are supporting the responsible management of the world's forests.

**BOARDIO 100 HEIGHT**

**IN DEVELOPMENT** - Ideal for: Below 300g

**BOARDIO 140 HEIGHT**

**Volume: 1,500 mL**

**Fill weight (Density Dependent) Ideal for: 300g-900g**

**BOARDIO 200 HEIGHT**

**Volume: 2,500 mL**

**Fill weight (Density Dependent) Suitable for: 500g-1,500g**

**BOARDIO 254 HEIGHT**

**Volume: 3,300 mL**

**Fill weight (Density Dependent) Suitable for: 750g-2,000g**



**AVAILABLE  
CAPACITY  
100,000  
UNITS  
PER DAY.**





# CERTIFICATIONS

Our coffee is proudly certified by several organizations to ensure it exceeds industry standards for quality, taste and environmental sustainability.



Find out more at [ra.org](http://ra.org)



FAIRTRADE INTERNATIONAL



SMETA the Sedex Members Ethical Trade Audit





## CONTRACT PACKAGING AND INNOVATION

Located in Totowa, New Jersey, JJM is a 3rd party SQF-certified manufacturing facility for dry food, powder filling, grains, and supplement products

As a dedicated co-packer, we offer a wide range of packaging solutions, including pouches, sachets, stick packs, canisters, K-cups, and Boardio containers. We formulate, blend, and/or package powdered beverages, meal replacements, and supplements.





## NEW COMPANY = NEW TECHNOLOGY = HIGH SPEED AND RELIABLE MACHINES

JJM is a co-packaging company, specializing in flexible pouches, sachets, stick packs, K-cups, and Boardio. Founded in 2018, JJM owns and operates multiple high-speed, modern packaging lines. Just as the technology in our cell phones is evolving at an ever-accelerating rate, the same can be said for packaging machinery. The evolution of packaging technology coupled with the dedication, knowledge & expertise of JJM's staff to operate and improve upon our lines, has proven JJM to be innovation in and of itself since we opened the doors.

- ✓ **Sachet** – *approx. 1 Million units per day*
- ✓ **Pouch** – *approx. 75,000 units per day*
- ✓ **Boardio** – *approx. 100,000 units per day*
- ✓ **K-Cup** – *approx. 100,000 units per day*
- ✓ **Stick Pack Capacity** – *approx. 1 Million units per day*
- ✓ **Secondary Packaging** – *Cartons, Pouches, Boxes, and Bulk*



### STICK PACKS

Long, skinny pouches made of paper or plastic and sealed on two short ends.



### SACHETS

A perfectly proportioned product. 3 or 4-sided. Wide variety of sizes.



### POUCHES

Stand-up pouches, flat barrier bags, vertical pouches, or horizontal pouches with up to 4-sided seals.



### BOARDIO

These containers support products such as powder fillings, protein powders, dry food, and coffee.



### K-CUPS

Hot beverage or health supplement in a K-Cup compatible format.



### CANISTERS

For dry food and supplement products. Customized to any fill weight, size, and design.

# WHAT WE OFFER

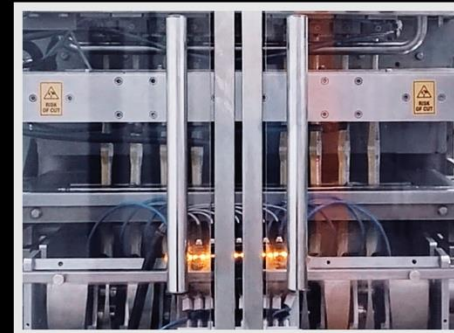
JJM OFFERS A TURNKEY SOLUTION.



Specializing in Flexible Package Forming and Powder Filling, JJM is on the cutting-edge of the packaging industry. Simply put, we are passionate about packaging

We're dedicated to providing you with packaging that exceeds your expectations, demonstrated by our high-quality packaging services, state-of-the-art design and branding solutions, extensive product knowledge, and commitment to responsible manufacturing.

Our ownership and staff understand today's market and help start-up brands take on the task of bringing a new product to the market.



## BLENDING CAPABILITIES

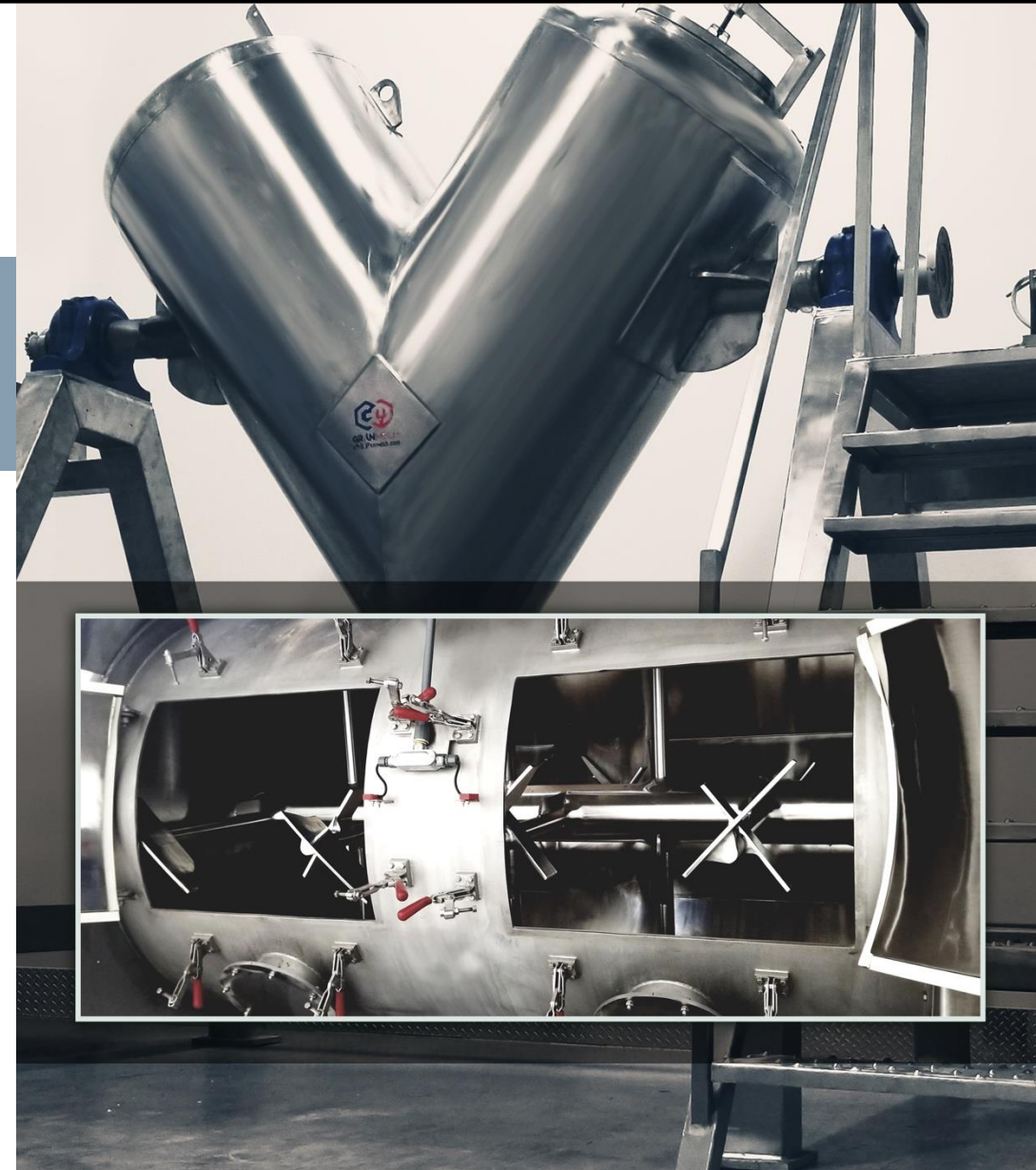
JJM Packaging has 20,000 KG of daily blending capacity. We can blend and pack under the same roof and in some cases the same blending unit is what feeds the packaging machine – no need for multiple handling of the product.

**V Blender** designs are most often used for the dry blending of free-flowing solids. The material being blended in the unit can vary in bulk density and in percentage of the total mixture. During blending materials are constantly being split and intermixed as the shell rotates.

**Average Blending Size: 500 kg**

**Paddle Blender** designs assure a continual and complete mixing action, while preventing product build up and degradation. The blender consists of multiple paddles positioned to gently lift and fold powder into itself reducing the level of agitation exerted on the blended product.

**Average Blending Size: 1,000 kg**





## FORMULATING

**We have the knowledge, experience, and capability to optimize formulation not only for taste and functionality but, also manufacturability.**

After spending time learning about your product, we begin the process of researching and contacting suppliers to find exactly what you need.

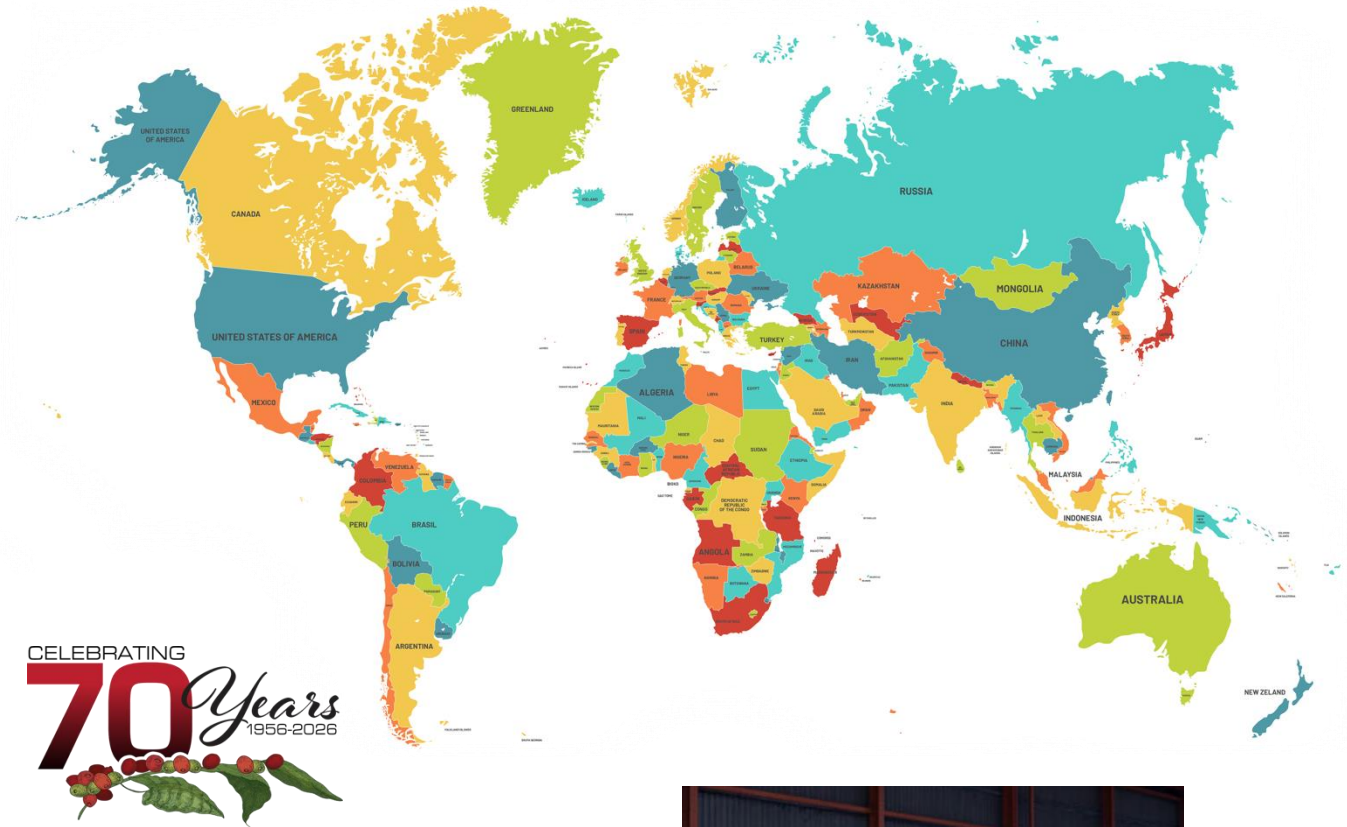
While we like to think of ourselves as experts, we know that nothing is ever perfect on the first try. Our process is engineered to encourage formulations, reformulations and products adjustments until our clients are 100% happy with their product.

## MATERIAL SOURCING

**JJM sources materials and raw ingredients that you can feel good about.**

JJM's sourcing of materials and raw ingredients (e.g. sugar, cocoa, whey protein) is recognized as some of the finest in the industry. We take the time to thoroughly investigate, evaluate, and interact with our material suppliers to ensure that your packaging is made from the materials that best suit your needs.

Our dedicated team are experts at procuring the materials needed to package your product in accordance with strict commercial regulations. We welcome the challenge of finding new sources to meet unique material standards. There's hardly anything that hasn't been thrown our way!



Armenia with 70 years of experience lends its capability for the purposes of procuring JJM's raw materials when needed.





IS PLEASED TO BE CERTIFIED  
IN THE TOP INDUSTRY  
ORGANIZATIONS.

JJM strives to ensure that our facility consistently produces quality products. We are prepared to meet regulations and legal responsibilities while providing insurance to clients with our certifications.







# BLOOM FIBERS

organic material innovation

# Swap out the plastics and paper in your packages with organic, compostable materials.

Bloom Fibers is an organic material innovation company on a mission to fix a giant waste problem plaguing the coffee supply chain by giving coffee waste a second life. We make it easier for companies and individuals to reduce their carbon footprints one bean at a time. Get in touch to learn more about our mission and to hear about how you can have your products packaged in our sustainable material!



Our solutions are  
compostable,  
not indisposable.



## PACKAGING MATERIAL SOLUTIONS

Paper, film and molded fiber products that are both durable and compostable.

[Learn More](#)



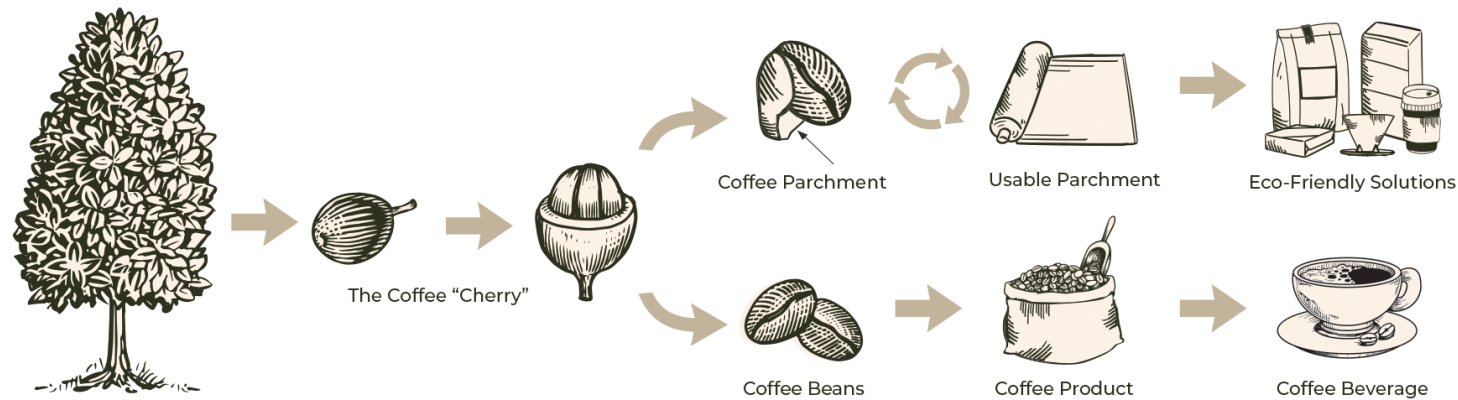
## HOW IT WORKS

We pulp and convert thousands of tons of natural waste from the coffee supply chain into packaging alternatives.

[Find Out](#)

# UTILIZING THE WHOLE BEAN

Parchment is the protective layer around the coffee bean that is left behind after the coffee is harvested. Did you know there is over 23 million excess tons of parchment waste that comes from harvesting coffee beans every year? We've found a use for all of it.



## FUTURE K-CUP



## Converting natural waste from the coffee supply chain into packaging alternatives.

Through years of experimentation and research, our team at Bloom Fibers patented a new process that pulps coffee parchment and transforms it into a strong, 100% compostable material that has endless potential uses as a more sustainable alternative to paper and plastics. We give coffee parchment a second life and are committed to helping people and companies reduce their footprints one bean at a time.

[Learn More](#)



# COFFEE BEAN EXPERTS

## Bloom Fibers represents the supply chain.

Over 70 years of experience in importing, roasting and packaging coffee has led to the formation of Bloom.





*Armenia*  
COFFEE CORPORATION  
EST. 1956



**R**  
REGAL  
COMMODITIES



**JJM**  
PACKAGING



  
**BLOOM FIBERS**  
organic material innovation

THANK YOU